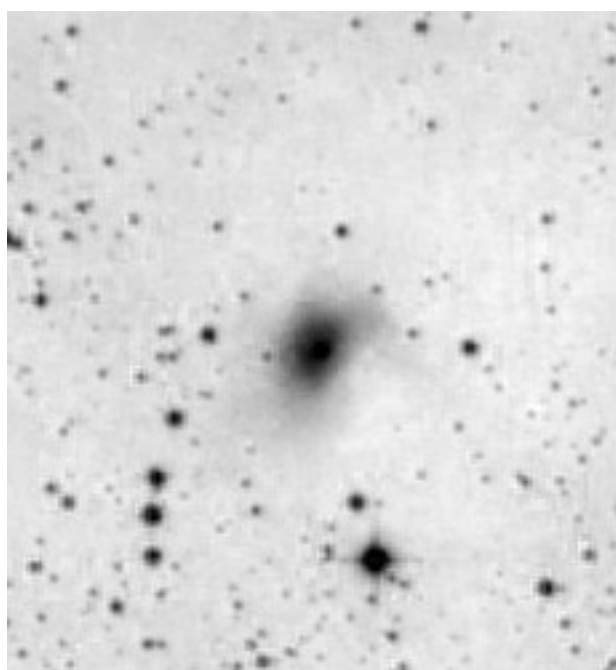
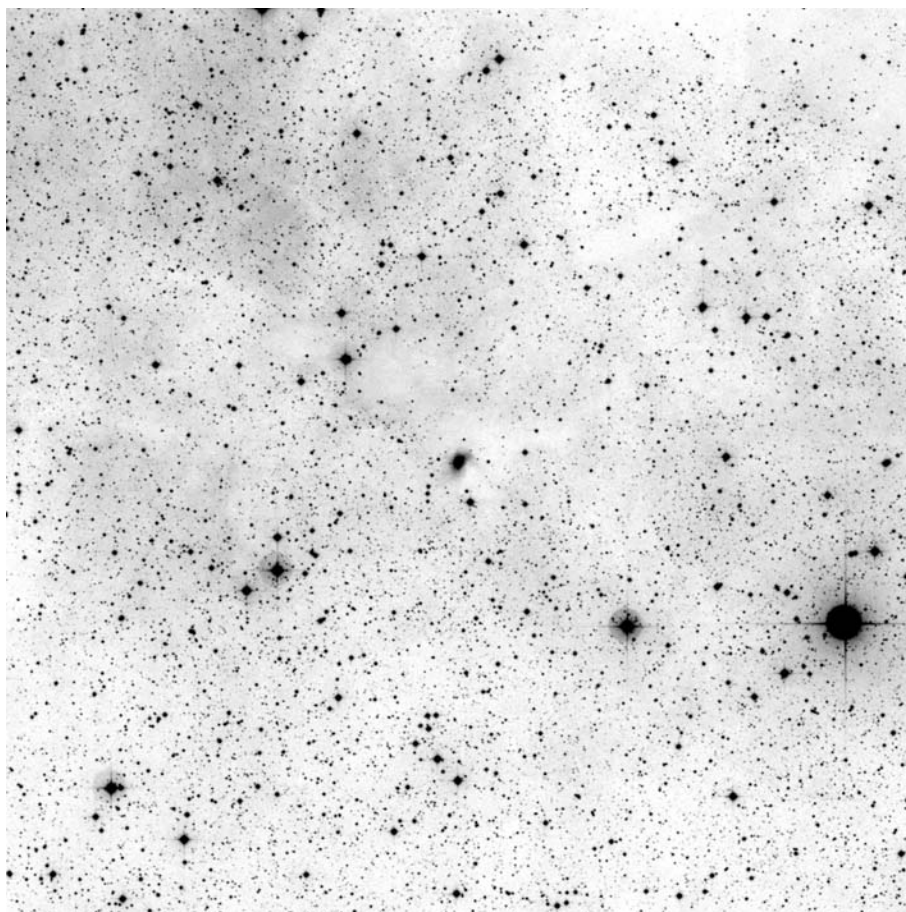


## GM 2-39 in Cygnus



POSS blue



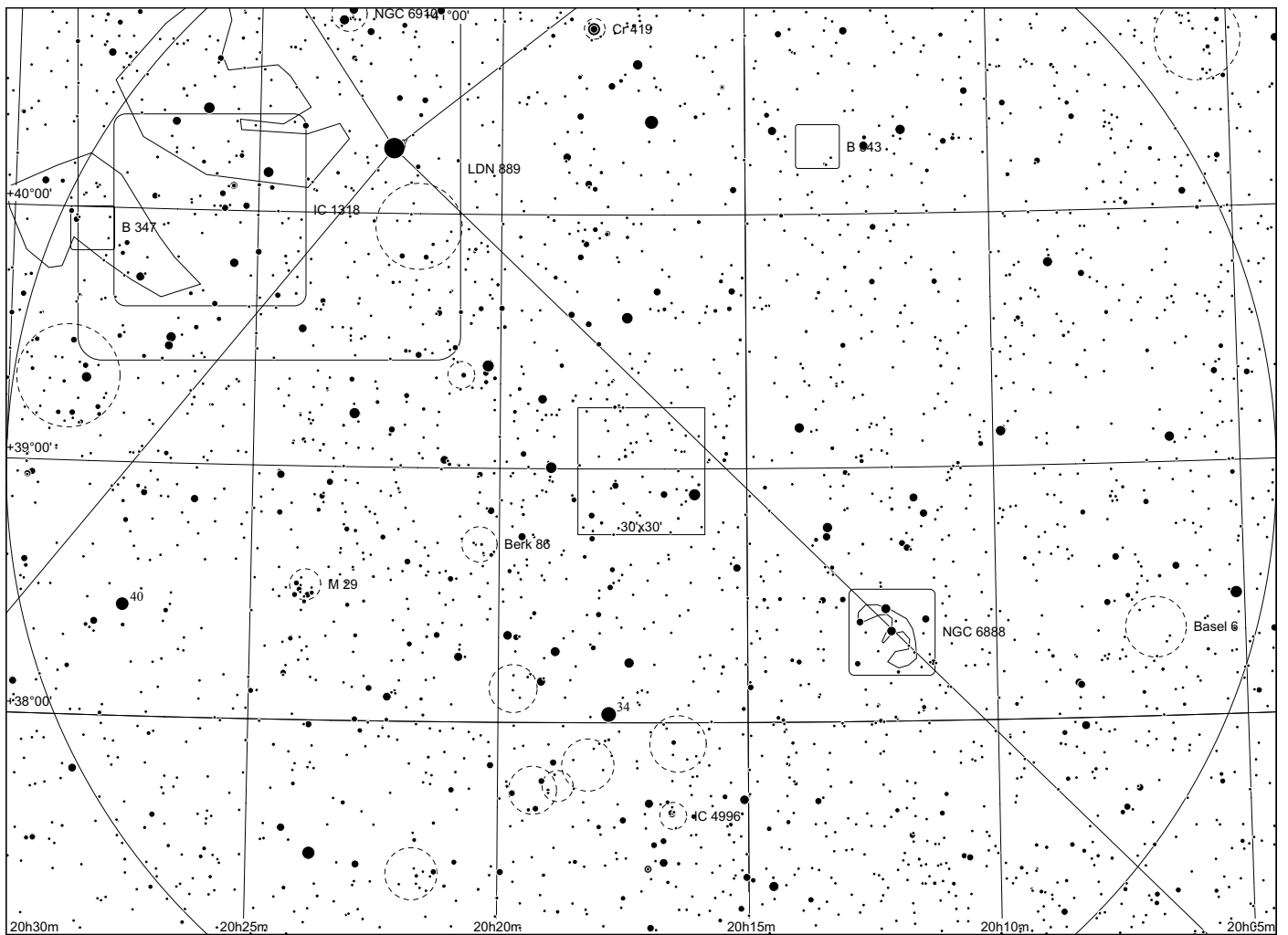
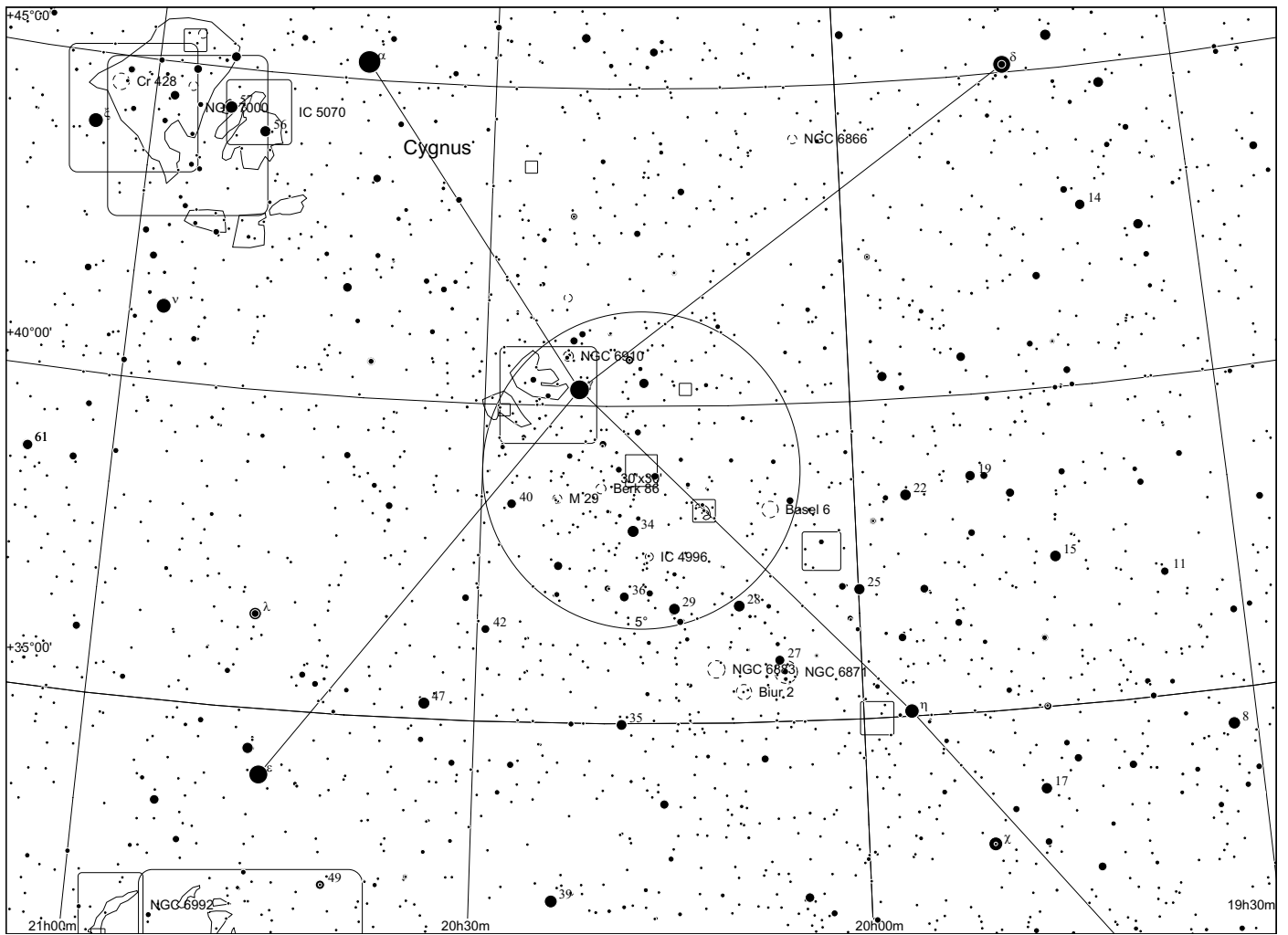
POSS composite

	other	RA	Dek	comments
<b>GM 2-39</b>		20 17 08.05	+38 59 29.4	emission line star

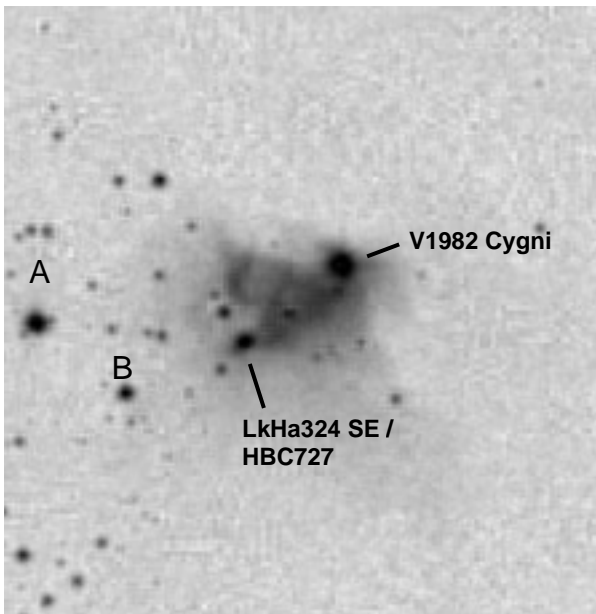
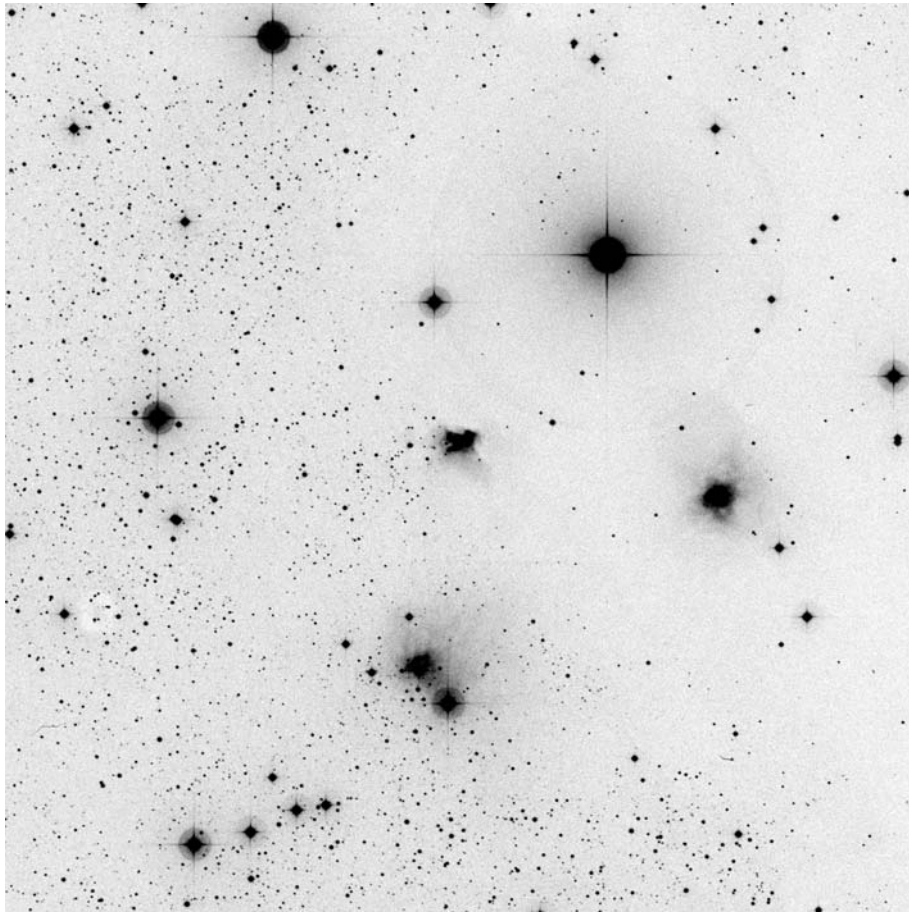
Observing notes:

22" f/4.5

With 350x, a distinct, but very small nebula is visible next to a prominent curved chain of stars. It appears very diffuse, getting very much brighter to the center, having a quasi-stellar center. At times, the center appeared elongated in N/S direction.



# Gyulbudaghian 98-171 / V1982 Cygni



POSS blue



POSS composite

	other	RA	Dek	comments
<b>Gyul 98-171 (ISM), V1982 Cygni</b>	LkHa 324, HBC 305	21 03 55.92	+50 14 24.0	emission line star

## Observing notes:

22" f/4.5

At 350x, nebulosity is immediately visible E of V1982 Cygni, which is a relatively bright stellar object. First the nebulosity appeared diffuse and structureless, while during extended observation a more defined roughly WE oriented streak was visible. HBC 727 was visible at the end of this streak with indirect vision, but could not be held steadily. The stars A and B were steadily visible with direct and indirect vision, respectively.

